



Classes Designed for Adoptive Parents

Prenatal Drug & Alcohol Exposure - \$25/person, \$40/couple

AFTH wants families to make informed decisions when completing their profile keys. This is a great opportunity to listen to medical professionals weigh in on prenatal exposure to drugs and alcohol. Each family has to decide what situations are right for them. Many families came away from this class feeling comfortable opening their key.

“After the class, we felt ready to modify our key. We submitted it two days after the class and less than three weeks later, we were matched with our daughter BECAUSE of our changes!” - Kim

“Don’t change your key just to get placed faster. Do it because you gained knowledge that now makes you comfortable for different situations.” - AFTH Social Worker

Hosting Class in Delaware

Presenter Dr. Erin Meyer is an Internal Medicine and Pediatric Hospitalist who works in the NICU (Neonatal Intensive Care Unit) at Christiana Hospital. She is also an adoptive mom through AFTH, and can speak from both professional and personal angles. She will be discussing the effects of drug and alcohol use during pregnancy on the newborn as well as withdrawal symptoms and short and long term effects of exposure. This class is suitable for all prospective and current adoptive parents. There will be plenty of time for your questions.

August 20th from 6:30-8:00pm

Brandywine Hundred Library

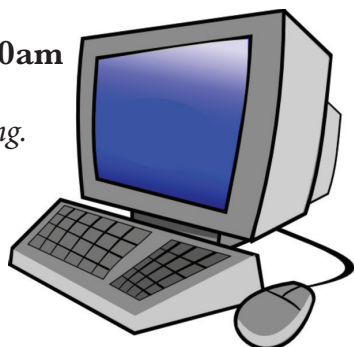
Register at least 1 week prior. Families are encouraged to register early as classes fill quickly.

Online Webinar - \$35/family

Hosted by Dr. Erin Meyer

November 2nd at 10:00am

Link will be emailed in 1-2 business days after registering.



Hosting Class in Pittsburgh Area

Lisa M. Pietrusza, RN, DNP-FNP, is a graduate from the University of Pittsburgh with a concentration in family practice. She is currently finishing an additional certification in psychiatric practice and completed a rotation in a specialized perinatal mental health clinic. Her manuscript has been accepted into the Journal of Addictions Nursing. she is currently a nurse practitioner at Central Outreach Wellness Center, an infectious disease and LGBTQ clinic. Lisa has over ten years as a registered nurse with experience in community health, mental health and holistic nursing. Presenter will discuss effects of prenatal drug/alcohol exposure on the newborn, as well as mental health conditions and infectious diseases in the birth parents. This class is suitable for prospective adoptive parents and those already parenting. Question/answer period follows lecture.

October 19th from 11:00am-12:30pm

Monroeville Public Library

Register at least 1 week prior. Families are encouraged to register early as classes fill quickly.

**Register Online at
www.afth.org/calendar**



Infant and Child Care (Central PA) - \$25/person, \$35/couple

This infant care class especially for adoptive families will cover the basics of infant and child care including: newborn appearance, newborn behaviors, diapering and dressing, feeding, umbilical cord care, newborn health and safety basics, when to call your pediatrician as well as other changes that may come with new parenthood. This class is exclusively for prospective adoptive parents and allows them to learn in a non-medical environment without a focus on pregnancy and childbirth. There will be plenty of time for questions and for AFTH families, this class will count toward the agency's childcare requirement.

**Location: Giant Community Center
in Harrisburg, PA
Time: 6:30-8:30pm**

Upcoming Dates:

September 16th and November 18th
Register at least 1 week prior to class.

Adoptive Parent Panel (Virginia) - \$15/person, \$20/couple

Come hear the voices of those who have experienced parenting through varying adoption circumstances at our "Adoption Experiences Panel". We will have adoptive parents who have experienced transracial adoption, varying medical circumstances, and openness in adoption at different levels. Please join us to learn and ask questions! Immediately following the panel will be a waiting family support group. Please email Nicole at NicoleF@afth.org if you would like to attend the support group.

September 28th from 10:00am-11:30pm
AFTH Chesapeake Office
Register at least 1 week prior to class.

Connected Parenting (New York) - \$10/person, \$15/couple

This course will be presented by an international adoptive mother, and licensed social worker, Rebekah McGee, LMSW. Rebekah will be sharing her personal experiences and knowledge based on Dr. Karyn Purvis at TCU - Trust-Based Relational Intervention. This class is great for both prospective adoptive parents as well as individuals whom are already parenting.

August 29th from 6:00-7:30pm
Brooklyn Public Library - Pacific Branch
Register at least 1 week prior to class.

Birth Parent Panel: What Adoptive Parents Should Know (New Jersey) - \$10/person, \$15/couple

A panel of birth parents who have made an adoption plan will discuss their experiences and answer questions from waiting adoptive parents. Topics to be covered include: qualities that are important to birth parents when they choose an adoptive family, the pre-placement meeting, hospital expectations, and openness in adoption, including picture and letter updates and visits.

October 17th from 6:30-8:00pm
AFTH Cherry Hill Office
Register at least 1 week prior to class.

**AFTH Waiting Adoptive
Families Will Receive Required
Continuing Education Credits
for Attending These Classes!**